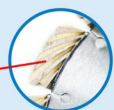


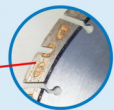


# INFILTRATED HIGH DENSITY

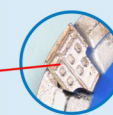
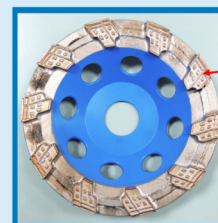
10x CUTTING CAPACITY COMPARED TO STANDARD CUTTING DISCS.



CLIPPER PRO EXPLORER IHD



CLIPPER DUO EXTREME IHD



CLIPPER CLASSIC IHD CUPWHEEL

CODE	SIZE(mm)
------	----------

70184603372 (4") 105 x 2.0 x 16.0/20.0  
 70184603350 (7") 180 x 22.23

CODE	SIZE(mm)
------	----------

70184647790 (14") 350x25.4

CODE	DESCRIPTION	SIZE(mm)
------	-------------	----------

70184602513 Classic CG B2 (4") 100x22.23/16  
 70184694996 Classic H4.5 (5") 125x22.3  
 70184601079 Classic H4.5 (7") 180x22.23



CLIPPER MULTI MATERIAL DIAMOND BLADE

CODE	SIZE(mm)
------	----------

70184603093 (4") 100x16/20mm



CLIPPER EXTREME CERAMIC CONTINUOUS

CODE	SIZE(mm)
------	----------

70184603269 (4") 105 x 1.8 x 20/16



CLIPPER EXTREME UNIVERSAL SEGMENTED

CODE	SIZE(mm)
------	----------

70184603270 (4") 105 x 1.8 x 20/16



CLIPPER PRO COMBO

CODE	SIZE(mm)
------	----------

70184602507 (12") 300 x 25.4  
 70184602508 (14") 350 x 27/25.4  
 70184602509 (16") 400 x 27/25.4  
 70184602510 (18") 450 x 27/25.4  
 70184602511 (20") 500 x 27/25.4  
 70184602512 (24") 600 x 27/25.4



CLIPPER EXTREME CERAMIC ULTRA THIN

CODE	SIZE(mm)
------	----------

70184603272 (4") 105 x 1.2 x 20/16



CLIPPER EXTREME UNIVERSAL TURBO

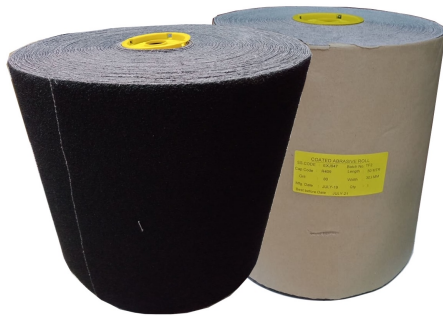
CODE	SIZE(mm)
------	----------

70184603271 (4") 105 x 2.3 x 20/16

\*PRICES ARE SUBJECT TO CHANGE WITHOUT PRIOR NOTICE  
 REVISED 05A: 1-12-2023

# CLOTH ROLLS

Coated Abrasive Rolls are ideal for fast easy sanding, light deburring and polishing of wood, paint, metal and plaster, rust and scale. They can be torn to exact lengths as needed. Used for all general purpose applications.



**(ALL-PURPOSE)**

### Product Features

- X wt. Polycotton backing with silicon carbide grains
- Close coat

### Recommended

- Rolls
- Narrow belts
- Wide belts

### Benefits

- Best in class cut rate
- Consistent finish & performance
- High strength; Resistance to tearing
- Ability to withstand high grinding pressure
- Can be used in both wet & dry condition

### Max. Jumbo Width

- 1350mm

### Typical Applications

- Back Scouring of Laminates
- Calibration & Intermediate sanding of Particle Borads / MDF,
- Glass Edge Beveling,
- SS Coil Grinding & Polishing,
- FRP Tube / Pipe Polishing

CODE	DESCRIPTION	GRIT
78072704568	CLOTH ROLLS 305MM x 50MTS R409	P36
78072704569	CLOTH ROLLS 305MM x 50MTS R409	P60
78072704570	CLOTH ROLLS 305MM x 50MTS R409	P80
78072704571	CLOTH ROLLS 305MM x 50MTS R409	P100
78072704579	CLOTH ROLLS 305MM x 50MTS R409	P120

### SHARPENING STONE



CODE	66253461327	69083194790
SIZE(in) approx.	6 x 2 x 1	8 x 2 x 1
DESCRIPTION	SHARPENING STONE COMBINATION (60pcs/box)	

### POLISHING COMPOUND

Application: SS mirror polishing  
Solid in terms of minerals faster polishing and longer life.  
Made in Thailand

ITEM CODE:  
**78072707743**



Weight : 800 grams



# elipper®



Discover our core bits especially designed for drilling · Reinforced concrete, cured concrete, kerb stones, concrete, pipes, engineering bricks, facing bricks, refractory bricks, flagstones and paving stones, block paving, washed gravel concrete slabs, natural stone, flint, sandstone, limestone.

## PRO CB BETON SOFT LASER

**Useful length:** 450mm.

**Connection:** 1 ¼ UNC female thread.

**Applications:** Concrete, reinforced concrete and hard building materials.

10mm brazed segments for wet and dry drilling.

Special soft bound for use in harder materials or for high speed drillings.



CODE	OUTSIDE DIAMETER(mm)	FULL LENGTH (mm)	NO. OF SEGMENTS	SEGMENTS SIZE(mm)
70184607646	57	450	4	3.8 x 12
70184607647	82	450	6	3.8 x 12
70184607648	107	450	9	3.8 x 12
70184607649	132	450	10	4.2 x 10
70184607650	162	450	11	4.2 x 10

## PRO CERAM VB DRY

**Connection:** Ø 10mm connection for 3-jaw chuck power drills.

**Application:** For dry or wet drilling.



Electroplated diamond drills designed for drilling all types of tiles found in the industry, will also give outstanding performance on hard and brittle materials such as marble, granite and porcelain.

CODE	DIAMETER(mm)
70184607712	28mm
70184607711	35mm
70184607710	45mm



# NORTON

SAINT-GOBAIN®

## MADE IN INDIA

### FLAP DISC (T27) BEAR PREMIUM (30% HIGHER CUT RATE)



<b>CODE</b>	78072735332	78072735369	78072735371	66261159950
<b>GRIT</b>	P36	P60	P80	P120
<b>DESCRIPTION</b>	FLAP DISC ALUMINUM OXIDE (20pcs/box) 100x16mm, 15,300rpm, 80m/s			

### FLEXIBLE FLAP DISC BEAR PREMIUM



<b>CODE</b>	78072715536	78072715537	78072715538
<b>GRIT</b>	P60	P80	P120
<b>DESCRIPTION</b>	FLEXIBLE FLAP DISC (20pcs/box) 100x16mm, 15,300rpm, 80m/s		

### FLAP DISC (T29)



<b>CODE</b>	66261160148	66261160149	66261160154	66261160161
<b>GRIT</b>	P36	P60	P80	P120
<b>DESCRIPTION</b>	FLAP DISC ZIRKON (10pcs/box), 100x16mm, 15,300rpm, 80m/s			

### SANDING / FIBER DISC



<b>CODE</b>	66261161061	66261161064	66261161065	66261161057	66261161058
<b>GRIT</b>	P36	P60	P80	P100	P120
<b>DESCRIPTION</b>	SANDING / FIBER DISC ALUMINUM OXIDE (100pcs/box), 100x16mm				



**NORTON**

SAINT-GOBAIN

**clipper**<sup>®</sup>

DRILL MOTORS &amp; DRILLING RIGS

CODE: **00310464031****PRESSURE WATER  
10L TANK**CODE: **CDM 163+CDR 163****CDM 163**

Powerful 1.8kW, 3 speed handheld drill motor with combined spindle 1/2+1/4. Can be used on a drill stand.

**CDR 163**

Aluminum drill stand combining rigidity, precision and ease of use. Accurate and smooth drilling guide of four high performance nylon rolls. Easily accessible guiding wheels for wear compensation adjustment.

**FEATURES**

- ▶ Powerful 1800W drilling motor.
- ▶ Combined spindle.
- ▶ Ergonomic handles.
- ▶ 60mm ring on body.
- ▶ 3-speed gearbox.
- ▶ Oil-bath lubricated gearbox.
- ▶ Mechanical clutch.
- ▶ Soft-start switch.
- ▶ Overload protection.
- ▶ Delivered in suitcase.

**BENEFITS**

- ▶ For both handheld and rig-mounted drilling.
- ▶ For the mounting of 1/4 and 1/2 corebits.
- ▶ East torque-control and comfortable to use.
- ▶ Can be mounted on drill rigs.
- ▶ For a wide drilling diameter range.
- ▶ Maintenance-free life-long lubrication.
- ▶ For users safety.
- ▶ Limitation of starting current and speed.
- ▶ Protection of electrical & mechanical parts for longer life.
- ▶ Easy and safe transportation.

**PRODUCT DATA CDM 163**

Item No.	70184647807
Power	1800W
Volts	230V1-
Range	15-160mm
RPM*	540/1200/2280
Dry	Yes**
Wet	Yes
Connection	1/2+1/4
Weight	8.1kg

\* RPM under load

**PRODUCT DATA CDR 163**

Item No.	310468577		
Diam. Max	160mm	Motor mounting plate	Ring 60mm
Hub	600mm	Carriage	Aluminum
Column	Aluminum	Carriage Guiding system	Rolls
Column Section	45x60mm	Carriage handle	Yes
Base	Dowel+vacuum	Carriage travel	1:1
Base dimensions	280x460mm	Braces	Yes
Height	850mm	Tilting	0-45°
Weight	9.6kg	Spirit level	No
Bit guide	No	Transport wheels	No

CODE: **CDM 353+CDR 353****CDM 353**

Powerful 3.3kW, 3 speed drill motor with a 1/4. To be used in a drill stand.

**CDR 353**

Aluminum drill stand combining rigidity, precision and ease of use. Accurate and smooth drilling guide of four high performance nylon rolls. Easily accessible guiding wheels for wear compensation adjustment.



CDR 353

00310472133  
**SPACER****FEATURES**

- ▶ 3300W motor.
- ▶ 3-speed gearbox.
- ▶ Standard motor mounting fixture
- ▶ Overload protection.
- ▶ LED load indicator.
- ▶ Soft-start switch.
- ▶ Mechanical clutch.
- ▶ Oil-bath lubricated gearbox.

**BENEFITS**

- ▶ Powerful and professional motor.
- ▶ For a wide drilling diameter range.
- ▶ Fits to most drilling rigs on the market.
- ▶ Protection of electrical and mechanical parts for longer life.
- ▶ For optimum drilling in-feed and longer life.
- ▶ Limitation of starting current.
- ▶ For optimal protection of motor and tools.
- ▶ Maintenance-free life-long lubrication.

**FEATURES**

- ▶ Aluminum column.
- ▶ Roll-guided carriage.
- ▶ Transport wheels.
- ▶ 4 points level adjustment.
- ▶ Multi-purpose drive-lever.
- ▶ Standard motor mounting fixture.
- ▶ Transport handle.
- ▶ Pre-mounted rig.

**BENEFITS**

- ▶ Robust, reliable and light weight.
- ▶ High accuracy drill guiding, low maintenance.
- ▶ For easy transportation.
- ▶ Quicker and faster installation.
- ▶ Can be used for levelling and locking screws.
- ▶ Fits to most drilling motors on the market.
- ▶ Easy and ergonomic handling.
- ▶ 2 different reports/ratio for an easy work.
- ▶ Use it directly out of the box.

**PRODUCT DATA CDM 353**

Item No.	70184647810
Power	3300W
Volts	230V1-
Range	30-350mm
RPM*	192/390/570
Dry	No
Wet	Yes
Connection	1/4
Weight	13.5kg

\* RPM under load

**CDR 353 + SPACER**

Item No.	310468581+310472133		
Diam. Max	400mm	Carriage Guiding system	Rolls
Hub	690mm	Carriage handle	Yes
Column	Aluminum	Carriage travel	1:1+2:1
Column Section	70x70mm	Braces	Yes
Base	Dowel+vacuum	Tilting	0-45°
Base dimensions	370x550mm	Spirit level	Yes
Bit guide	Yes	Transport wheels	Yes
Motor mounting plate	Plate included	Height	1080mm
Carriage	Aluminum	Weight	23.9kg

**OSA**® Organization for Safety of Abrasives



- Worldwide protected label for the **highest level of tested** safety of cutting and grinding tools.
- Tested compliance with **EN safety** standards for **abrasive products**.
- Regular **manufacturing controls** and product monitoring.
- Regularly **audited manufacturer** with certified quality management and documented process.



<b>CODE</b>	66252845170	66252845160	66252845161	66252845162
<b>Size (mm)</b>	100 x 3 x 16	100 x 6.8 x 16	125 x 6.8 x 22.23	180 x 6.8 x 22.23
<b>DESCRIPTION</b>	Clipper 4" Flexible Grinding Disc	Clipper 4" Grinding Wheel	Clipper 5" Grinding Wheel	Clipper 7" Grinding Wheel



<b>CODE</b>	66252845194	66252845169	66252845195	66252845905	66252845168
<b>Size (mm)</b>	105 x 1.2 x 16	100 x 2.5 x 16	125x 1.2 x 22.23	125x 2.5 x 22.23	180 x 2.5 x 22.23
<b>DESCRIPTION</b>	Clipper 4" Ultra Thin Wheel	Clipper 4" Cutting Wheel	Clipper 5" Ultra Thin Wheel	Clipper 5" Cutting Wheel	Clipper 7" Cutting Wheel



<b>CODE</b>	66252846090	66252845165	66252845163	66252845164
<b>Size (mm)</b>	180 x 3.0 x 22.23	300 x 3 x 25.4	350 x 3 x 25.4	405 x 3 x 25.4
<b>DESCRIPTION</b>	Clipper 7" Cutting Wheel	Clipper COW 12"	Clipper COW 14"	Clipper COW 16"





## SILICON CARBIDE WATERPROOF SHEETS

Norton offers a wide range of high-performance Waterproof Paper and Emery Sheets for wood, wall and metal hand sanding applications.

### Best for:

- Wood, Wall & Metal sanding
- Paint substrates

### Features:

- Durable Paper Backing
- Premium Silicon Carbide grains
- Electro coated
- Water resistance Bond system

### Benefits:

- Strong grip & longer life
- High cut rate & superior finish
- High wet strength
- Resistance to loading



CODE	DESCRIPTION	GRIT
78072702453	SHS SST 230x280 T490 NORTON LION	120
78072702454	SHS SST 230x280 T490 NORTON LION	150
78072702455	SHS SST 230x280 T490 NORTON LION	180
78072702456	SHS SST 230x280 T490 NORTON LION	240
78072702457	SHS SST 230x280 T490 NORTON LION	320
78072702458	SHS SST 230x280 T490 NORTON LION	400
78072702461	SHS SST 230x280 T490 NORTON LION	1000
78072702595	SHS SST 230x280 T490 NORTON LION	1500
78072702596	SHS SST 230x280 T490 NORTON LION	2000



## NORTON TRITON WATERPROOF SANDPAPER



Code	Description
66623328771	230 x 280 T483 P80
66254409794	230 x 280 T483 P100
66254409566	230 x 280 T483 P120
66254409567	230 x 280 T483 P150
66254409568	230 x 280 T483 P180
66254409569	230 x 280 T483 P220
66254409570	230 x 280 T483 P240
66254409795	230 x 280 T483 P280
66254409571	230 x 280 T483 P320
66254409796	230 x 280 T483 P360
66254409572	230 x 280 T483 P400
66254409574	230 x 280 T483 P600
66254409575	230 x 280 T483 P800
66254409576	230 x 280 T483 P1000
66254409797	230 x 280 T483 P1200
66254409799	230 x 280 T483 P1500
66254499676	230 x 280 T483 P2000



## NORTON FLOOR SANDING PAPER

Code	Type	Mineral Color	Grit	Description
78072750159	H231	Aluminum Oxide (Red)	40	305 x 50M H231 P40
78072750163			60	305 x 50M H231 P60
78072750167			80	305 x 50M H231 P80
78072750168			100	305 x 50M H231 P100
78072750173			120	305 x 50M H231 P120
66261119376	H425	Silicon Carbide (Black)	36	305 x 50M H425 P36
78072755671			60	305 x 50M H425 P60
78072755672			80	305 x 50M H425 P80
78072755673			100	305 x 50M H425 P100
78072755674			120	305 x 50M H425 P120