



SIMPLEX INVERTER BOOSTER SYSTEM MHIKE SERIES



Model	Power Output KW (HP)	PowerSupply (Phase/Volts/Hz)	Inlet x Outlet Size (mm)	Rated Head		Best Efficiency	
				LPM	Meters	LPM	Meters
NEW MHIKE-205A	1.5	1/220/60	1 x 1	17-100	55-5	56	52
NEW MHIKE-404A	2.0	1/220/60	1-1/4 x 1	20-125	50-20	65	45
NEW MHIKE-405A	2.5	1/220/60	1-1/4 x 1	20-150	70-25	100	50



DUPLEX / TRIPLE INVERTER BOOSTER SYSTEM MHIKE SERIES

Model	Power Output (HP x UNIT)	PowerSupply (Phase/Volts/Hz)	Inlet x Outlet Size (mm)	Rated Head		Best Efficiency	
				LPM	Meters	LPM	Meters
NEW MHIKE-D404A	2 x 2	1/220/60	50 x 50	60-340	60-20	135	50
MHIKE-W804UA	3.3 x 2	3/380/60	65 x 65	85-650	70-10	360	50
MHIKE-T804UA	3.3 x 3	3/380/60	80 x 80	85-850	70-18	540	65



SIMPLEX INVERTER BOOSTER SYSTEM PBI-L SERIES



Model	Power Output (HP)	PowerSupply (Phase/Volts/Hz)	Inlet x Outlet Size (mm)	Rated Head		Best Efficiency	
				LPM	Meters	LPM	Meters
PBI-L203MA	1.0	1/220/60	1 x 1	17-100	45-5	50	32
PBI-L403MA	1.5	1/220/60	1-1/4 x 1	20-160	40-15	67	37
PBI-L404MA	2.0	1/220/60	1-1/4 x 1	20-125	60-20	90	41
PBI-L803MA	2.5	1/220/60	1-1/2 x 1-1/4	40-250	50-8	125	40
PBI-L405MA	2.5	1/220/60	1-1/4 x 1	20-150	70-25	100	50

DUPLEX INVERTER BOOSTER SYSTEM PBI-L SERIES



Model	Power Output (HP x UNIT)	PowerSupply (Phase/Volts/Hz)	Inlet x Outlet Size (mm)	Rated Head		Best Efficiency	
				LPM	Meters	LPM	Meters
PBI-LD402MA	1 x 2	1/220/60	50 x 50	40-300	32-5	166	35
PBI-LD403MA	1.5 x 2	1/220/60	50 x 50	80-340	48-10	166	38
PBI-LD803MA	2.5 x 2	1/220/60	65 x 65	40-500	45-5	250	35
PBI-LD404MA	2 x 2	1/220/60	50 x 50	60-340	60-20	135	50



PRODUCT FEATURES

- Optimized hydraulics with efficiency of up to 80%. - High range of performance from 1 to 250m³/h
- Long service and corrosion resistant. - High degree of flexibility
- ACS certified for domestic hot water applications

PSS SERIES

STAINLESS STEEL SUBMERSIBLE BOREHOLE PUMP FOR 4" & 6" WELL CASING DIAMETER

MODEL	PUMP SIZE (INCHES)	POWER (HP)	RATED CAPACITY (GPM)	DISCHARGE CONN. (INCHES)	STAGES IMPELLER (NO.)	CAP. HEAD (FT.)	BEST EFF. (FT.)
PSS-3-9	4"	1.0	13	1-1/4"	9	295-130	197
PSS-3-13	4"	1.5	13	1-1/4"	13	403-197	295
PSS-3-17	4"	2.0	13	1-1/4"	17	522-230	360
PSS-3-23	4"	3.0	13	1-1/4"	23	720-298	489
PSS-5-7	4"	1.0	22	1-1/2"	7	164-79	157
PSS-5-9	4"	1.5	22	1-1/2"	9	295-105	197
PSS-5-11	4"	2.0	22	1-1/2"	11	348-154	239
PSS-5-15	4"	3.0	22	1-1/2"	15	462-259	325
PSS-5-21	4"	5.0	22	1-1/2"	21	640-308	443
PSS-8-5	4"	1.5	35	2"	5	141-69	115
PSS-8-7	4"	2.0	35	2"	7	197-98	138
PSS-8-9	4"	3.0	35	2"	9	256-131	174
PSS-8-15	4"	5.0	35	2"	15	410-203	279
PSS-8-21	4"	7.5	35	2"	21	574-292	387
PSS-14-3	4"	2.0	62	2"	3	92-46	75
PSS-14-5	4"	3.0	62	2"	5	157-79	118
PSS-14-8	4"	5.0	62	2"	8	252-115	193
PSS-14-12	6"	7.5	62	2"	12	374-157	285
PSS-14-16	6"	10.0	62	2"	16	515-279	426



*PRICES ARE SUBJECT TO CHANGE WITHOUT PRIOR NOTICE
New: October 5, 2018

HiMulti 5 - Simplex Booster Pump



Model code identification

Wilo-HiMulti 5-4 5 i P Q

① ② ③ ④ ⑤

① 4	Rated flow (m ³ /h)
② 5	Impeller stages
③ i	Inverter
④ P	P: Self-Priming
⑤ Q	Low noise

Technical Data

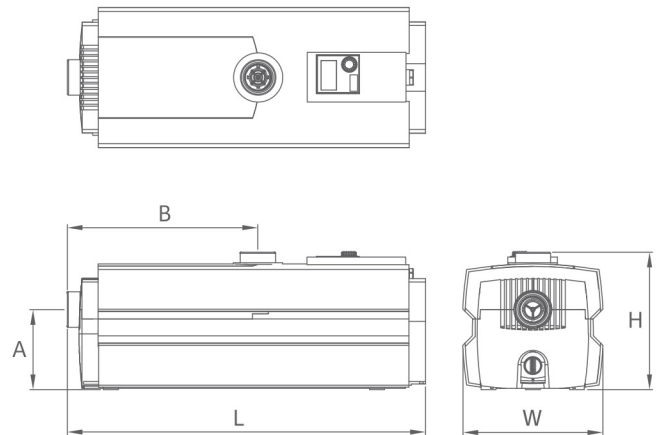
Wilo-HiMulti 5					
Model	Power Source	Input (W)	Head (m)	Flow (m ³ /hr)	Connection Dia. (mm/inch)
HiMulti 5-45 iPQ	1ph 220V-60Hz	750	50	6.6	32mm(1-1/4")

Applications

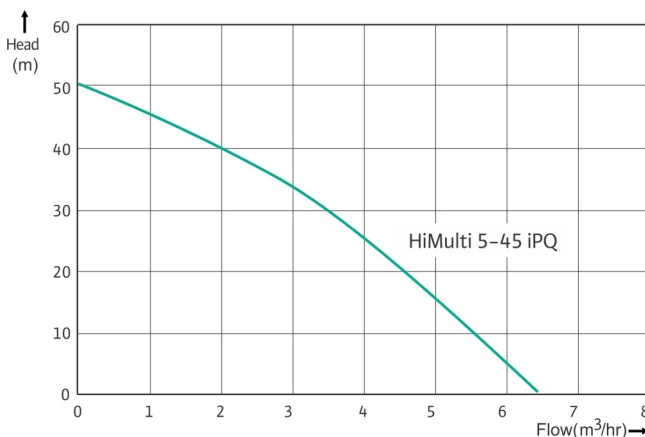
- Pumps designed for pumping and pressure boosting of clean water* in the residential sectors.
- Pressure boosting of water from roof tank, breaktank, ground tank, other static water supply etc.
- Water supply from shallow well. This pump is for indoor installation.

* clean water : pH6~8, no foreign matter (can occur decrease in abrasion resistance of product and nstable automatic operation due to foreign matters)

Dimension Drawing



Performance Curve



Unit : mm

Model	H	W	L	A	B
HiMulti 5-45 iPQ	222	228	584	131	311

wilo

PUMP



CODE (TYPE)	INITIAL PERIPHERAL	INITIAL JET 3-4	INITIAL JET 4-4
Description	Peripheral Pump	Shallow Well Jet Pump	Shallow Well Jet Pump
Material	Cast Iron	Cast Iron	Cast Iron
HP	0.50	0.75	1.0
Voltage	220V~60Hz	220V~60Hz	220V~60Hz
RPM	3450	3450	3450

Jet WJ Series



CODE (TYPE)	WJ-201-X-EM/6	WJ-202-X-EM/6/B	WJ-203-X-EM/6/B
Description		SELF PRIMING PUMP	
Material	Stainless Steel	Stainless Steel	Stainless Steel
HP	0.50	0.75	1.0
Voltage	220V~60Hz	220V~60Hz	220V~60Hz
RPM	3450	3450	3450



CODE (TYPE)	DWP 1.0	DWP 1.5	DWP 2.0
Description	Deep Well Jet Pump-1stg (no adapter)	Deep Well Jet Pump-2stg (no adapter)	
Material	Cast Iron	Cast Iron	Cast Iron
HP	1.0	1.5	2.0
Voltage	220V~60Hz	220V~60Hz	220V~60Hz
RPM	3450	3450	3450

Optional Accessories



Adapter + Ejector

CODE	WL-DWP-A+E	WL-DWP-A2+E
Description	Adapter + Ejector	Adapter + Ejector
Applicable for	Wilo DWP 1.0	Wilo DWP 1.5 & DWP 2.0

*PRICES ARE SUBJECT TO CHANGE WITHOUT PRIOR NOTICE

REVISED03 : August 20, 2021



wilo

Vertical Turbine / Split Case Fire Pumps



Vertical, single, and multi-stage, turbine pumps for fire protection. **UL listed and FM approved** pumps for suction lift conditions. Available with diesel or electric drive.

Product Features



1 Design

Compact design that integrates pump and switchgear with UL/FM approved components



2 Installation

Robust axially split case pumps to cover the main needs of commercial or industrial buildings

3 Equipment

Elastic coupling with misalignment compensator for electric pump and universal coupling complies with UL requirements and is accepted by FM for diesel pump



4 Power supply

Main pump with power reserve based on 150 % of the rated volume flow, available with electric motor or diesel engine



5 Versatility

Product configurations available on request, depending on installation conditions



6 Maintenance

Safe and easy installation and maintenance



PD Series – Submersible Drainage Pump

Application

- General drainage with solids (solid size: under strainer suction bone)
- Drainage for waste water treatment and small disposal facility.
- Drainage for small fountain and artificial water falls.
- Drainage for agriculture and horticulture.
- Drainage for underground commercial facility, building, building basement.
- Machine room and sanitation as well as under-ground leachate.

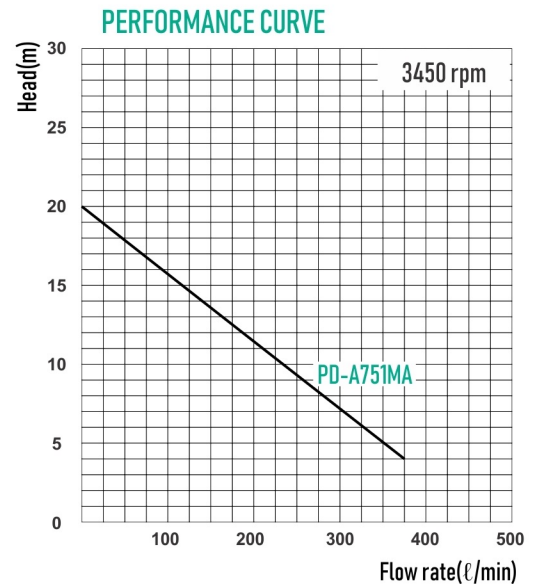
Features

- Powerful performance up to max head (21m) and flow rate (ℓ550) up to 5HP range.
- Stainless steel shaft.
- Perfect selling wit double mechanical seal and oil seal.
- Thermal protection.



PD-A751MA

Model	: PD-A751MA
Power Source	: Single Phase, 220V-60Hz
Output kW(HP)	: 950(1-1/4)
Discharge Dia.(mm)	: 50(2")
Head(m)	: 7
Flowrate(ℓ/min)	: 250
Max Head	: 18
Max Flowrate(ℓ/min)	: 370



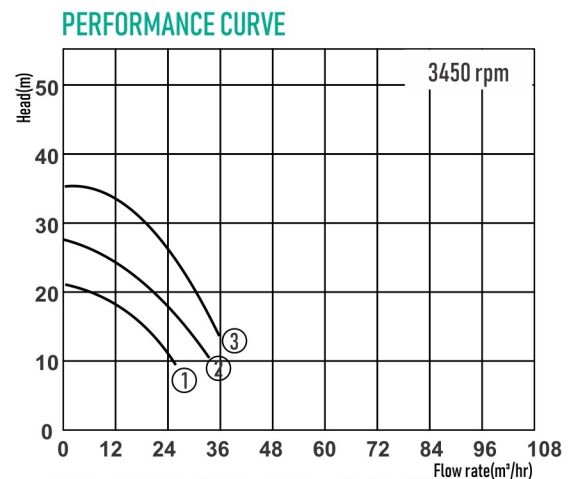
PD-1505M



PD-2200T



PD-3700T



Model	Power Source	Output kW(HP)	Discharge Dia. (mm)	Head (m)	Flowrate (m/h)
PD-1505M	Single Phase, 220V, 60Hz	1.5(2HP)	80(3")	10	350
PD-2200T	Three Phase x 220V, 60Hz	2.2(3HP)	80(3")	21	18
PD-3700T	Three Phase x 220V, 60Hz	3.7(5HP)	80(3")	21	30



Member of
German Water
Partnership



PDN Series - Submersible Sewage Pump

Application

- Drainage for waste water at factories and waste water treatment plant
- Delivery of sewage at sewage treatment plant, human waste treatment
- Drainage for buildings
- Treatment utility drainage

Standard Materials

- Casing : Gray Cast Iron
- Impeller : Gray Cast Iron
- Shaft : Stainless Steel

Features

- Stainless steel shaft as standard
- Leak-proof by double mechanical seal and oil seal
- Motor protection by T.P
- Excellent sludge transfer by non clog type
- Safety design with built-in OLP (overload protector)
- Various materials are available



PDN-1404M

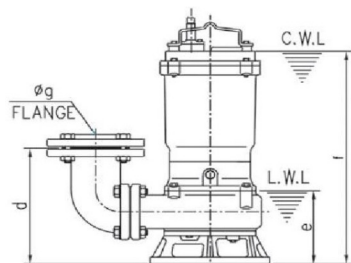
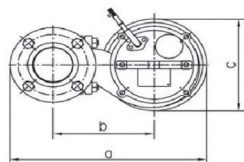
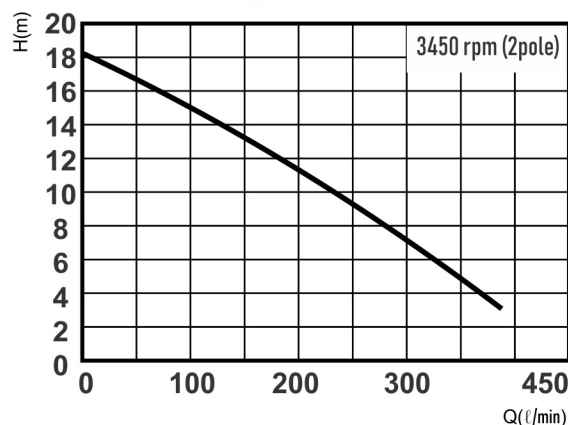


PDN-2200T

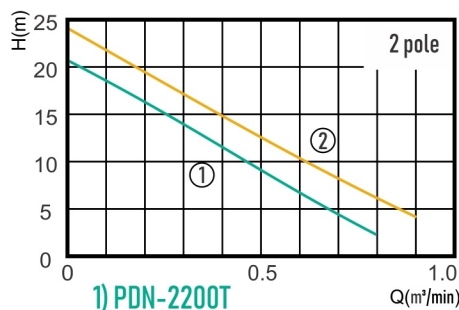


PDN-3700T

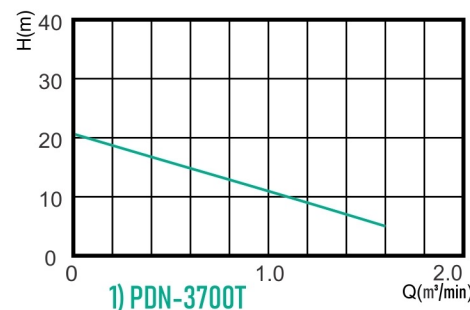
PERFORMANCE CURVE



DIMENSION DRAWING



1) PDN-2200T



1) PDN-3700T

Model	Power Source PH x V	Output kW(HP)	RPM	Discharge Dia. (mm)	Head (m)		Flow Rate (gpm)		Rated Current (A)	Bearing	
					Max	BEP	Max	BEP		Upper	Lower
PDN-1404M	1 x 220	0.95(1-1/4)	3450	50	19	10	105	67	8	6202ZZ	6203ZZ
PDN-2200T	3 x 220	2.2(3)	3450	65	23.8	13.5	238	125	8.1	6203ZZ	6306ZZ
PDN-3700T	3 x 220	3.7(5)	1800	80	21.5	12	390	240	4.1	6305ZZ	6308ZZ



Member of
German Water
Partnership





SINGLE DIAPHRAGM PRESSURE TANK

Factory Precharge: 30P.S.I./2 bar
 Maximum Pressure: 150P.S.I./10 bar
 Maximum Temperature: 90 °C

Note: Pre-charge pressure must be less than 2PSI below cut-in pressure.

Model	Thread	Total tank Volume (L)	Accept Volume (L)	Net Weight (Kg)	Base Material	Connection Dimension	Dimension (mm)	
							A	B
Vertical type with base								
PTB 100	NPT	100	58.5	15.0	Plastic	1"	985	381
PTB 130		130	85.6	20.8	Steel	1 1/4"	750	559
PTB 160		160	115	24.1	Steel	1 1/4"	915	559
PTB 235		235	140	34.9	Steel	1 1/4"	1160	559
PTB 305		305	167	44.8	Steel	1 1/4"	1450	559
PTB 450		450	450	64.2	Steel	1 1/4"	1400	650

STAINLESS STEEL SUBMERSIBLE BOREHOLE MOTOR FOR 4" & 6" WELL CASING DIAMETER



High Quality Thrust Bearings

The thrust bearing is of the kingsbury type lubricated by the internal fluid. During operation a wedge of water is drawn between the stainless steel pivot shoes and carbon disc to carry the thrust load generated by the pump. Located inside and at the bottom of the motor, the bearing is sealed away from sand and other contaminants.

Sand Resistant Slinger and Lip Seals

A stainless steel slinger and slinger guide are also closely fit to help prevent sand entry. Double rubber seals are installed to prevent well water and contaminants from entering the motor.

High Reliable Carbon Bearing

Two water lubricated carbon bearings are used as guide bearings. These have extremely large surface area and result in extra alignment support-less whipping and acts as a steady bushing.

Water-Filled Design

The motor lubrication is provided by the internal cooling water consisting of a water, anti-freeze and anti-rust mixture good to 30°C (-22°F). This mixture is installed at the factory. Two water plugs are located near the top of the motor and are used by the installer to check the water level or to the top off needed before installation.

Complete Corrosion and Water-Tight Protection

All main motor components are made of stainless steel: including the can housing (water tight type motors have baked epoxy coated steel housing), Shaft and bolts. All other motor parts are coated with the baked epoxy coating.



SUBMERSIBLE BOREHOLE MOTOR

MODEL	MOTOR SIZE	POWER	PHASE	VOLTS	Hz
MS4-10-1-1-T	4"	1.0	1	230	60
MS4-15-1-1-T	4"	1.5	1	230	60
MS4-20-1-1-T	4"	2.0	1	230	60
MS4-30-1-1-T	4"	3.0	1	230	60
MS4-30-3-2-T	4"	3.0	3	380	60
MS4-50-1-1-T	4"	5.0	1	230	60
MS4-50-3-2-T	4"	5.0	3	380	60
MS4-75-3-1-T	4"	7.5	3	230	60
MS6-100-3-2-T	6"	10.0	3	380	60

CONTROL BOX

MODEL	POWER (HP)	PHASE
CBC-10125	1.0	1
CBC-15125	1.5	1
CBC-20125	2.0	1
CBC-30125	3.0	1
CBC-50125	5.0	1



*PRICES ARE SUBJECT TO CHANGE WITHOUT PRIOR NOTICE
Revised 02 : November 13, 2018