

	RECHARGEABLE WORK LIGHTS			RECHARGEABLE ANGLE HEAD WORK LIGHTS			RECHARGEABLE FLOODLIGHTS		
image									
model	<b>GZ-171/GZ-101</b>	<b>GZ-172/GZ-102</b>	<b>GZ-173/GZ-103</b>	<b>GZ-200</b>	<b>GZ-271</b>	<b>GZ-272</b>	<b>GZ-371</b>	<b>GZ-372</b>	<b>GZ-373</b>
Battery	Li-ion 3.7V 1,000mAh	Li-ion 3.7V 2,200mAh	Li-ion 3.7V 4,000mAh	Li-ion 3.7V 750mAh	Li-ion 3.7V 2,200mAh	Li-ion 3.7V 4,000mAh	Li-ion 7.4V 4,400mAh	Li-ion 11.1V 4,400mAh	Li-ion 14.8V 5,200mAh
Brightness	Eco : ~70lm HI : ~130lm	Eco : ~130lm HI : ~240lm	Eco : ~240lm HI : ~450lm	Eco : ~35lm HI : ~100lm	ON : ~240lm Top:~35lm	Eco : ~240lm HI : ~450lm Top:~35lm	Eco : ~500lm HI : ~1,000lm	Eco : ~800lm HI : ~2,000lm	Eco : ~1,200lm HI : ~4,000lm
Run time	Eco : 6h Hi : 3h	Eco : 6h Hi : 3h	Eco : 6h Hi : 3h	Eco : 8h Hi : 2.5h	Main : 3h	Eco : 6h Hi : 3h	Eco : 6h Hi : 3h (with battery)	Eco : 5h Hi : 2h (with battery)	Eco : 6h Hi : 2h (with battery)
Charging time	3 h	4 h	4 h	3 h	4 h	4 h	4 h	4 h	4 h
IP	Testing	IP54	IP54	IP52	Testing	Testing	IP67	IP67	IP67
Size (mm)	W50xH117xD25	W51xH155xD25	W56xH184xD25	W32xH214xD38	W38xH281xD50	W42xH333xD57	W194xH108xD59	W223xH138xD65	W267xH165xD75
Weight	115g	175g	285g	112g	240g	330g	1,045g	1,400g	2,100g

## FLOODLIGHT ACCESSORIES



**GZ-3BR**  
HORIZONTAL BAR  
Use with GZ-3 series



**GZ-3VS**  
CLAMP-ON VISE  
Use with GZ-3 series



**GZ-3MB**  
MAGNETIC BASE  
Use with GZ-3 series



**GZ-3ST**  
TRIPOD STAND  
Use with GZ-3 series

**1 YEAR WARRANTY**



## BM series BM-600R

- LED type : 1 × Chip type white LED
- Light Output : 50lm
- Battery type : 3.7V 600mAh Li-ion Rechargeable Battery  
or 3 × AA Alkaline Batteries
- Charging Time : 2h
- Battery Cycle : 500 Cycles
- Run Time : 6h (Rechargeable battery) / 35h (Dry Batteries)
- Water Proof (IPX4)
- Impact Resistance : 1m Drop
- Size :  $\phi 82.0 \times 89.6\text{mm}$  ( $\phi 3.23 \times 3.53\text{in}$ )
- Weight : 148.4g (5.2 oz)
- Accessory : Micro USB Cable (20cm / 7.87in)

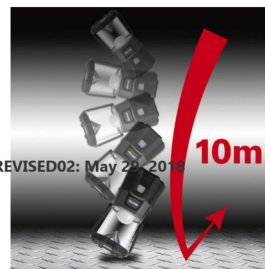


## POWER BANK LANTERN



## EX-000R

- LED type : 18 × Chip type white LED, 18 × Chip type warm white LED
- Light Output : 1000lm (Neutral White, 100%)
- Battery type : 3.7V 5,000mAh Li-poly Rechargeable Battery or 3 × D Alkaline Batteries
- Charging Time : 6h
- Battery Cycle : 300 Cycles
- Run Time : [Neutral White] 3h (100%) / 200h (10%),  
[Cool White] 6h (100%) / 250h (10%),  
[Warm White] 7.5h (100%) / 300h (10%), 150h (Candle Mode)
- Dust Proof & Water Proof (IP68)
- Impact Resistance : 10m Drop
- Size :  $\phi 102.2 \times 189.0\text{mm}$  ( $\phi 4.02 \times 7.44\text{in}$ )
- Weight : 680g (24.0 oz)
- Accessory : Hanging Hook, Micro USB Cable (50cm / 19.68in)



**GENTOS CO., LTD.**  
www.gentos.jp/en/



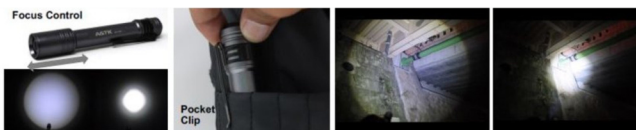
# G Series



## GH-003RG

- LED type : 1 × Chip type white LED
- Light Output : 500lm (High Mode)
- Battery type: 3.7V 5600mAh Li-ion Rechargeable Battery or 4×AA Alkaline Batteries
- Charging Time : 5h
- Battery Cycle : 300 Cycles
- Run Time : 12h (High Mode) / 25h (Mid Mode) / 56h (Eco Mode),  
[Rear] 560h(ON)/560h (Flashing)
- Lighting Technique : Focus Control
- Beam Distance : 60m
- Dust Proof & Water Proof (IP66)
- Impact Resistance : 2m Drop
- Size : [Front] W89.6×H40.4×D42.2mm (W3.53×H1.59×D1.66in),  
[Rear] W111.9×H70.2×D34.6mm (W4.41×H2.76×D1.36in)
- Weight : 295g (10.4 oz)
- Accessories : Head Strap, Charging Cable, A type AC Adaptor (5V / 2A),  
Helmet Clip, Rechargeable Battery)

# A&TK



### Aluminum Pen Light

**MNR-001G** (Gun Metal)

**MNR-001B** (Black)

- Light Output : 110 Lumens
- Peak Beam Intensity : 1024CD
- Beam Distance : 64m
- Run Time : 4.5h
- Impact Resistance : 1m
- Water Resistance
- Battery : 2x1.5V AAA (Not Included)
- Size : Ø14x142mm
- Weight : 50g (with Batteries)

### Aluminum Focus Control

**MNR-002G** (Gun Metal)

**MNR-002B** (Black)

- Light Output : 200 Lumens
- Peak Beam Intensity : 1340CD
- Beam Distance : 73m
- Run Time : 6-14h
- Impact Resistance : 1m
- Water Resistance
- Battery : 2x1.5V AA (Not Included)
- Size : Ø23x146mm
- Weight : 115g (with Batteries)



**MNR-001G** (Gun Metal)



**MNR-002G** (Gun Metal)



**MNR-001B** (Black)



**MNR-002B** (Black)